


Human GDNF Protein

Cat #: PRP1233

Size: 5 µg/20 µg/100 µg/1 mg

Product Information

	Product Name: Human GDNF Protein		
REF	Catalog Number: PRP1233	LOT	Lot Number: Refer to product label
	Purity: > 98% as determined by SDS-PAGE		
	Storage: Store at -20°C		Preparation method: E. coli
	Shipping: The product is shipped at ambient temperature.		

Background: GDNF is a disulfide-linked, homodimeric neurotrophic factor structurally related to Artemin, Neurturin and Persephin. These proteins belong to the cysteine-knot superfamily of growth factors that assume stable dimeric protein structures. GDNF signals through a multicomponent receptor system, composed of a RET and one of the four GFR α (α 1- α 4) receptors. GDNF specifically promotes dopamine uptake and survival, and morphological differentiation of midbrain neurons. Using a Parkinson's disease mouse model, GDNF has been shown to improve conditions such as bradykinesia, rigidity, and postural instability. The functional human GDNF ligand is a disulfide-linked homodimer consisting of two 15 kDa polypeptide chains called monomers. Each monomer contains seven conserved cysteine residues, including Cys-101, which is used for inter-chain disulfide bridging, and others that are involved in the intramolecular ring formation known as the cysteine-knot configuration.

Sequence: Amino acid sequence derived from Human GDNF (Ser78-Ile211) (P39905) was expressed.

Protein length: The recombinant Human GDNF consists of 134 amino acids and predicts a molecular mass of 15.1 kDa.

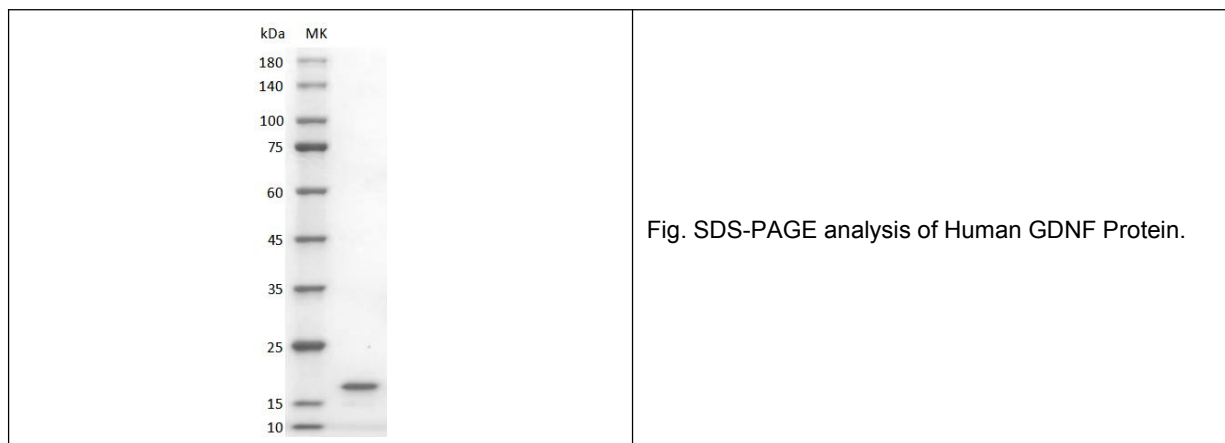
Biological Activity: Testing in progress.

Endotoxin: < 0.1 EU per µg of the protein as determined by the LAL method.

Formulation: Lyophilized from sterile 20mM Tris, 150mM NaCl, pH8.5.

Storage Instructions: Lyophilized protein product should be stored desiccated below -20°C. Upon reconstitution, the protein should be stored at 4°C between 2-7 days and for future use below -20°C. For long term storage it is recommended to add a carrier protein (0.1% HSA or BSA). Please prevent freeze-thaw cycles.

Usage notes: Always centrifuge tubes before opening. It is recommended to reconstitute the lyophilized protein using the buffer we provided not less than 100 µg/ml, which can then be further diluted to other aqueous solutions.



Note: The product listed herein is for research use only and is not intended for use in human or clinical diagnosis. Suggested applications of our products are not recommendations to use our products in violation of any patent or as a license. We cannot be responsible for patent infringements or other violations that may occur with the use of this product.